

1 Course Overview

Cedar Valley products are perfect for
Distinctive homes and upscale commercial projects



Easy-To-Install Panel Saves Time.

The patented Cedar Valley panel system installs easier and faster than most other siding products – on average four times faster than individual shingles. There's no starter course, the end joints don't require caulking and only minimal fasteners are needed per panel. Plus, the panel provides a seamless appearance with blind nailing application.

Higher Quality Western Red Cedar.

Cedar Valley uses only Western Red Cedar, "Nature's Finest Siding", for our panels. They are hand assembled in our factory using Kiln Dried #1 grade shingles made from precision paralleled wood and all lower grades and rejects are culled out during the assembly process. Only the finest shingles make our panels and to your home.

A Versatile, Integrated System.

The Cedar Valley panel system of panels, corners, column wraps, specialty products and more offers builders a wide range of options to provide a fully integrated siding system. The accessory line for the 1 Course panel is more extensive and allows more flexibility in design.

1-Course 7 1/8" Even Buttline Panel



1-Course Staggered Buttline Panel



1-Course Even Keyway Panel



Panels are available in Even Buttline, Staggered Buttline and Open Keyway shingle patterns. Specialized and Custom Exposures Panels are also available.

Color And Factory-Finished Choices.

Cedar Valley products are available in a wide range of color and factory-finished options. Factory-finished products come in a rainbow of colors and provide extended warranties up to 50 years.

Ratings And Approvals.

With hurricane wind ratings from 196 MPH to 211 MPH you know you are protected. Add national code approval, Florida Building Code approval and a Texas Dept. of Insurance rating as your assurance of a superior shingle siding panel.

There's No Substitute For Western Red Cedar.

Cedar Valley products are made from 100 percent kiln dried Western Red Cedar for a distinctive, upscale look. Synthetic siding can't come close to the appearance and performance of cedar. Beautiful, durable and low maintenance, cedar is the perfect compliment to any design style.

Standard Corners:



1-Course Flush
90° Corner



1-Course Flush
135° Corner



Add-On Corner

Custom Corners, Column Wraps and Flares:



1-C Extended Return



3-Piece Radius
Flare Corner Set



Column Wrap



Thickbutt Panel



Extra-Thick Panel with 50-yr Warranty!

A Thicker, More Rustic Shingle Panel.

Cedar Valley's unique Thickbutt Panel has hand-applied shingles with a butt thickness of ½-inch for a bolder look. The 8-foot panel is available with 7 1/8-inch and 5.3-inch exposures in our easy to install one-course design. Thicker shingles with open keyways create a bolder, shingle appearance.

Cedar Valley Goes Up Easy. And Stays Up!

Cedar Valley Thickbutt Panels install faster than most other siding products, saving on installation costs and providing outstanding levels of performance, durability and safety. In wind uplift tests, Cedar Valley offers 7 different panel styles that have been certified to withstand Hurricane force winds up to 210 MPH.



Options And Choices.

The Cedar Valley system of panels, corners, column wraps and other accessory products are handcrafted of 100% kiln-dried Western Red Cedar mounted to a full plywood backer. All panels come in a wide range of color and factory finished options. They're also available with a fire retardant treatment that results in permanent fire protection and they pass California State Fire Marshal W.U.I. codes untreated! With multiple exposures, textures and buttlines, the thickbutt panels are your best choice for a superior siding system!

A Great Warranty For A Great Siding.

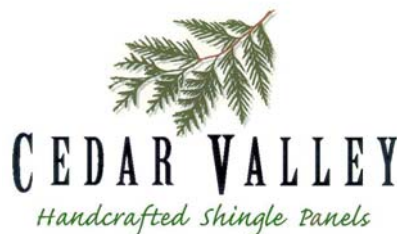
Combining the durability of the Two-Coat Factory Finish process with the unique beauty of the ½-inch thickbutt panel, Cedar Valley has the answer for longevity and low maintenance shingle siding. Our thickbutt panels are factory stained with a primer and acrylic stain top coat to give them an extremely durable and long lived coating. This system carries a 15+15 coating warranty serviced by the coating manufacturer and our longest 50-year limited liability panel warranty. *See actual warranty for limitations.*



(2-coat factory finished Thickbutt panel has 50-year warranty)



Comparison of STD panel to ½" Thickbutt



WHAT'S THE DIFFERENCE?



GRADING SHINGLE BUNDLES VERSUS PANELS

What is VG, MG & Flat Grain?

There are different grades & options when purchasing shingles. The three most commonly used are Vertical Grain (VG), mixed grain (MG), and flat grain (FG). VG is the highest grade, FG is the lowest grade and MG is in between.

Cedar Valley uses only the highest quality Vertical Grain shingles in the production of our standard panels. These VG shingles are the most stable. Flat grain shingles will cup and curl so we do not use them in our process.

In an effort to utilize more of the cedar resources, Cedar Valley does offer a MG product but with certain conditions to ensure the material meets Cedar Valley's highest quality standards. MG is only offered in ½" thick butt shingles with a factory applied coating. Cedar Valley's exclusive panel design has concealed glue and back staples at the bottom of all shingles which stabilize shingle movement.

When evaluating prospective bids you need to ask what type of shingle is being quoted. This detail is critical to the longevity & performance of your investment. Always ask for Vertical Grain shingles!

Western Red or Eastern White?

Eastern white shingles are only available in MG & FG due to smaller tree size. Western red cedar shingles are superior compared to eastern white shingles. You can stain western red cedar color wise to look like eastern white cedar.

Green or Kiln Dried?

Cedar Valley kiln dries every shingle to ensure a more stable shingle panel.



Green shingles are not kiln dried. Green shingles are more likely to cup, curl and shrink. In this case the green terminology is not related to the environment and is not desirable. Kiln drying the shingles also greatly increases the ability of the wood to absorb stain. Dry wood absorbs a lot more stain than wet wood.

Resawn texture or smooth texture?

Cedar Valley offers a resawn texture shingle. Resawn texture varies and is neither rough nor smooth. This is unique to Cedar Valley and highly desirable. A resawn texture shingle has many advantages over smooth sawn including stainability, retention of stains and overall performance. Please refer to the Cedar Valley Forest Product Laboratory bulletin for more extensive information on this subject.

What is R&R?

R&R stands for rebuttet and rejointed meaning the sides and bottoms of the shingles have been trimmed for a clean uniform paralleled appearance. Untrimmed shingles have a crooked sloppy appearance.

Panels or bundles?

Cedar Valley panels give you three layers of protection with a stable plywood backer, fiberglass mat, & shingles. You greatly reduce labor and waste with panels. Panels also have warranties available up to 50 years, numerous code approvals and testing accreditations.

If you save money upfront on bundles of shingles the money you save walks off the job in greater labor costs. The money you spend on panels will stay with you and your investment in the added materials and protection the panels offer.

CVTB-019-Feb 2014

Tech Bulletin #15

Premium Panel Components

Quality Materials for Quality Construction

The quality components of Cedar Valley shingle siding products are one of the reasons builders and owners use us over and over again. From the highest grade of Western Red Cedar to the stainless steel staples used in our woven corners, Cedar Valley searches out the best raw materials. Then the five major components are assembled under the strictest quality control standards to guarantee you the highest grade premium shingle panel siding system available on the market today.

Western Red Cedar

Used for centuries, western red cedar is one of the finest natural siding products. The tannins in WRC provide a natural resistance to insects & fungi, as well as providing the rich varied colors of the wood. Cedar Valley uses only the finest cedar available so you get the finest panel made!

11/32" Doug-Fir CDX Plywood

The 1-piece solid plywood backer is graded CDX with Douglass Fir outer cores and a seasonal inner core. Made to the exacting standards of A.P.A. specifications, it has to pass further quality inspections by Cedar Valley before use in our plant.

Galvanized Staples

The cedar is attached with 2 staples at the top of each shingle. Then the panel is flipped over and staples are added through the back to secure the shingle butts while the glue cures.

Premium Fiberglass Matte

Adding an additional U.V. barrier between the shingles and the plywood backer provides extra protection and durability. The fiberglass matt laminate works as an under coursing to protect the plywood against moisture intrusion between the keyways and to resist any U.V. degradation. The coated matte is also impervious to cleaners, solvents, wood stripping solutions and paint thinners.

Construction Grade Adhesive

Using moisture-cure urethane glue ensures our shingles stay attached to the plywood backer while still having room for the minor expansion and contraction characteristics of real cedar. The bond between the two woods is so strong that if a shingle is removed from the face of the panel, care must be taken not to damage the plywood backer.

Technical Questions Or Assistance

For questions on the components of our shingle siding panel please call the factory at 1-800-521-9523 and ask for a technical rep. We're always happy to help!



RESAWN TEXTURED WOOD IS MOST DESIRABLE FOR FINISHING OR STAINING FACTORY FINISHING IS SUPERIOR TO FIELD OR SITE FINISH APPLICATIONS

The following excerpts are taken from the Forest Products Laboratory's wood research report. The F.P.L. is part of the US Dept. of Agriculture. Other facts...

Forest Products Laboratory

Located in Madison, Wisconsin, since 1910 it is the nation's only federally funded wood utilization research laboratory which currently employs 60 Research Scientists and is primarily or partly responsible for many of today's wood-based technologies, including wood preservatives, glulam beams, oriented strandboard, & fiber-based packaging and has research partnerships located in virtually every state in the Nation

Cedar Valley Handcrafted Shingle Panels use the finest Cedar Shingles available with the most desirable traits for staining. Kiln dried Western Red Cedar shingles with a resawn texture. The resawn texture is referred to throughout the report in a great number of areas as the best option for retention of finishes, here are some excerpts:

“penetrating finishes such as solvent-borne oil-based semitransparent stains last longer on saw-textured wood than on smooth-planed wood, many film-forming finishes such as opaque stains and paints also last longer on saw-textured wood than on smooth-planed wood. Finishes adhere better, film buildup is thicker, and service life of the finish is longer on saw-textured surfaces than smooth-planed surfaces,”

Page 18:

Application, New Construction

Semitransparent stains perform well on saw-textured surfaces. If used on smooth wood, expect approximately half the service life compared with saw-textured surfaces (Table 16–4).



Picture of cross grain sawing of shingles

Page 9 paragraph one:

Table 16–4. Suitability and expected service life of finishes for exterior wood surfaces^a

| Type of exterior wood surface | Tinted finishes such as deck finishes | | Semitransparent stain | | Paint and solid-color stain | | |
|-------------------------------|---------------------------------------|--|-----------------------|--|-----------------------------|--|-------------------|
| | Suit-ability | Expected service life ^b (years) | Suit-ability | Expected service life ^c (years) | Suit-ability | Expected service life ^d (years) | |
| | | | | | | Paint | Solid-color stain |
| Siding | | | | | | | |
| Cedar and redwood | | | | | | | |
| Smooth (vertical grain) | Low | 1–2 | Moderate | 2–4 | High | 10–15 | 8–12 |
| Smooth (flat grain) | Low | 1–2 | Moderate | 2–4 | Moderate | 8–12 | 6–10 |
| Saw-textured | High | 2–3 | High | 4–8 | Excellent | 15–20 | 10–15 |
| Pine, fir, spruce | | | | | | | |
| Smooth (flat grain) | Low | 1–2 | Low | 2–3 | Moderate | 6–10 | 6–8 |
| Saw-textured (flat grain) | High | 2–3 | High | 4–7 | Moderate | 8–12 | 8–10 |

**RESAWN TEXTURED WOOD IS MOST DESIRABLE FOR FINISHING OR STAINING
FACTORY FINISHING IS SUPERIOR TO FIELD OR SITE FINISH APPLICATIONS**

Factory Staining is far superior to site applications of finishes & stains and ensures the longevity of the finish.

Page 24:

Factory Finishing

“Factory priming hardboard siding has been a standard industry practice for many years, and recently, factory-finished (primer and top-coats) siding, trim, and decking have become common. Factory finishing offers several advantages: avoids finishing during inappropriate weather, gives consistent film thickness, contributes to timely completion of structures, and decreases overall cost. Factory finishing is advantageous in northern climates where exterior finishing is impossible during the winter. Controlled application ensures consistent 0.10 to 0.13 mm (4 to 5 mil) dry film thickness,”

Factory finishing ensures that the wood does not weather at all prior to finishing. This detail is critical for getting the most longevity from the finish itself.

Page 11:

Effect on Paint Adhesion

“Wood erosion is slow, but chemical changes occur within a few weeks of outdoor exposure. Badly weathered wood having loosely attached fibers on the surface cannot hold paint. This is not obvious on wood that has weathered for only 2 to 3 weeks. The wood appears unchanged. Research has shown that surface degradation of wood exposed to sunlight for 1, 2, 4, 8, or 16 weeks prior to painting (pre-weathering) affects service life of subsequently applied paint. The longer the wood pre weathered, the shorter the time until the paint began to peel.

For boards pre weathered 16 weeks, the paint peeled within 3 years; for boards pre weathered only 1 week, the paint peeled after 13 years. Panels that were not pre weathered showed no sign of peeling after 20 years. Paints were commercial oil-alkyd or acrylic-latex primer with one acrylic-latex top-coat over planed all-heartwood vertical-grain western red cedar.”

What could be better than having your Cedar Valley Handcrafted Shingle panels factory finished? Doing it twice! Two coats are better than one coat and we have the warranty to prove it. Two semi transparent Sherwin Williams stain coats factory applied will qualify for a 25 year Cedar Valley product warranty! Maintenance conditions apply and coatings must be applied by approved finishers.

Page 19:

“Two coats of semitransparent penetrating stain may last 10 years on saw-textured wood. By comparison, the life expectancy of one coat of stain on new smooth wood is only 2 to 4 years,”

Sourced from: Forest Products Laboratory; US Department of Agriculture/ Forest Service/Research & Development

***Report available online at:
http://www.fpl.fs.fed.us/documnts/fplgtr/fplgtr190/chapter_16.pdf***

1 Course Blind Nail

Standard Nailing Instructions For 7-1/8", 6.0" & 5.3" *Easy Stack* panels



In the event Cedar Valley published application instructions conflict or contradict local building codes, please call the factory for clarification. If no local codes exist, refer to the I.C.C. residential building codes and these instructions for guidelines.

FIRST DETERMINE CORNER TYPE:

With Flush-mounting corners or corner board, install corner first. Double wrap building corners with moisture barrier. Attach corners using one **8D** Maze brand ring shank siding nail per corner side, 1.4" down from top edge, centered on each side. Apply the 4 marked corner units provided in order A,B,C,D (repeating). Start with any piece but retain the order or the "Boston Weave" will be off. Caulk corner plywood edges well. Trim panel end and push against caulked corner edge. Nail panel as per instructions below. (No starter course is needed.)

With Add-on corners, install all panels first, positioning so that panel ends are flush with corner without overlap. (Panel ends do not need to be trimmed.) Nail panel as per instructions below. Apply corners using one nail per corner side, halfway down from top of piece. Add-on corners require starter pieces made on-site from individual shingles. Apply approved building paper under panels as per national or local code requirements. Double wrap building corners.

PANEL APPLICATION:

Plan panel layout from lowest building corner after determining corner style to be used. Panels must be applied directly over nailable shear sheathing applied over studs, 16" O.C. A code approved building paper, must be applied directly behind the panels. Panels must span at least one stud spacing and vertical end joints must be staggered to join at studs. Horizontal scribed nail lines on Even Buttline panels enable proper nail placement for maximum wind uplift resistance. For Staggered buttline panels nail 1-inch down from top of panel every 16-inch O.C.

NOTE: Panels do not meet shear requirements!

NAILING INSTRUCTIONS:

Use one **8D Maze** brand ring shank siding nail every 16 inches on center. Nail the panels 1.4 inches down from the top **STARTING** ½ inch in from one edge and working across the panel. (See Fig 2) Use the scribed line across the top of each panel as a guide for nail placement. Never nail from both edges towards the middle. Each nail must hit the 2X4 stud or 7/16" nailable shear sheathing. Nail head should be flush with the surface of the panel. **DO NOT OVERDRIVE!** If the panel has been cut horizontally or diagonally, then the tops of each cut shingle must be restapled at the corners and the butt joint must be caulked. When nailing to ½" plywood, panel ends do not have to join on studs however the nails holding panels should be driven into studs. **Maximum stud distance is 16 inches O.C. for this nailing pattern!**

In high wind areas above 80 MPH use the Hurricane Nailing Instructions!

Flush 90 Corners



Add-On 90 Corners

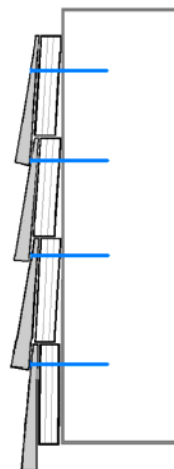
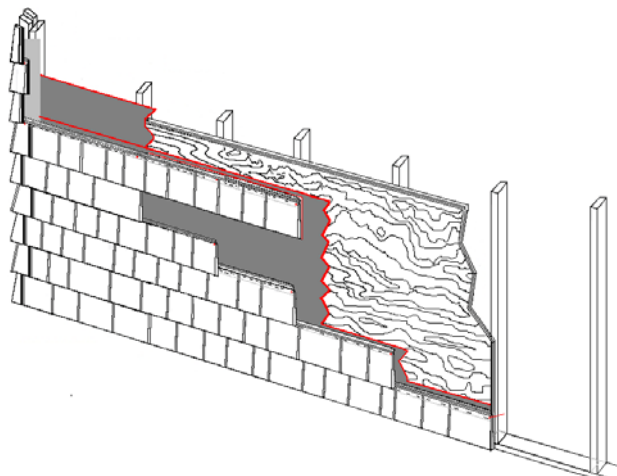


Figure 2

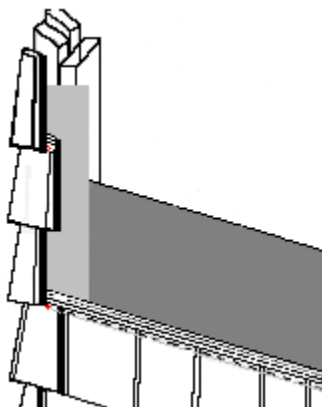


1 Course Blind Nail

Standard Nailing Instructions
For 7-1/8", 6.0" & 5.3" *Easy Stack* panels

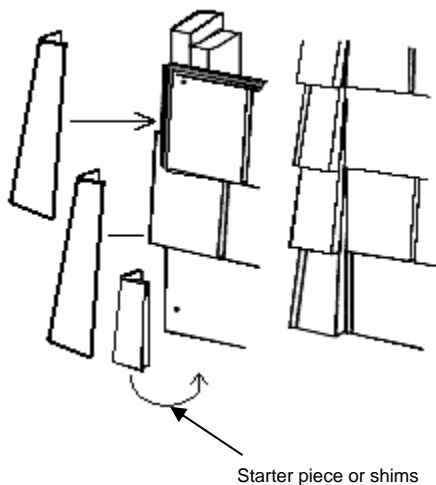
FLUSH CORNERS:

Flush-mounting Corner units are manufactured and supplied in four different alternating widths (marked A,B,C,D) so that the vertical corner line is eliminated. Start with any letter and continue in order up the corner. You can reverse the order or even omit one of the letters as long as you do not repeat the same letter. Hint: save the wide pieces (B's & D's) for areas near windows or doors that might otherwise need a small section of panel.



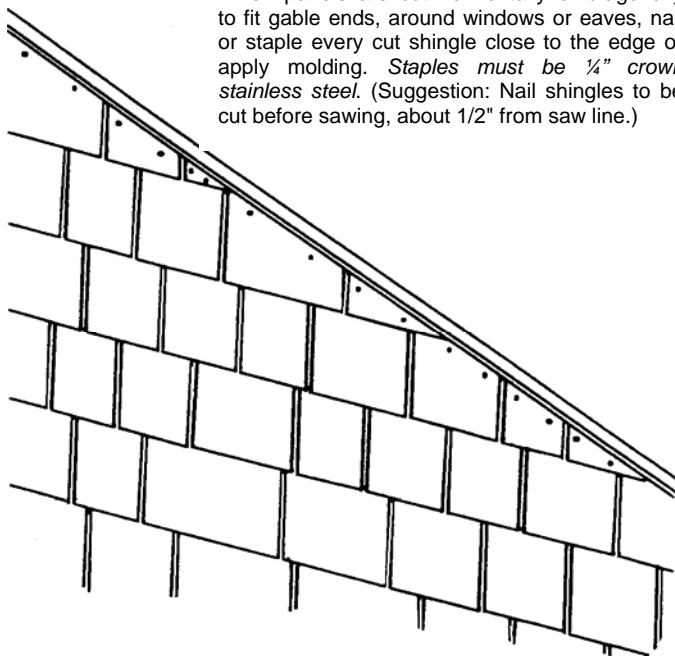
ADD-ON CORNERS:

Add-on corners are a Boston Weave overlay shingle without a plywood backer. Install panels first running them all the way to the edge. Install the Add-On corners OVER the panels aligning the butt of each corner piece to the butt of the panel. **One-course starter corners must be made on site for Add-on corners.**



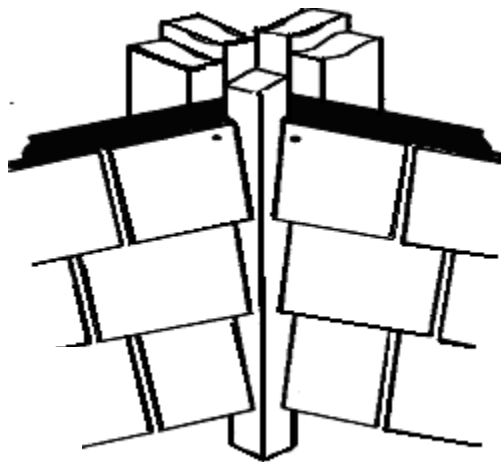
ANGLE CUTS:

When panels are cut horizontally or diagonally to fit gable ends, around windows or eaves, nail or staple every cut shingle close to the edge or apply molding. *Staples must be 1/4" crown stainless steel.* (Suggestion: Nail shingles to be cut before sawing, about 1/2" from saw line.)



INSIDE CORNERS:

Nail a 1-1/2"x 1-1/2" wood strip into the inside corner and caulk sufficiently where the plywood backer will butt against it. Trim panel end square and set panel against the strip. **Use caution that caulk does not squeeze out onto face of panel!**




CEDAR VALLEY
Handcrafted Shingle Panels

Technical Bulletin #9

1 COURSE 5.3" & 7 1/8" FLUSH CORNERS

1. Product Description.

One Course Flush-mounting corner units are specifically made to match one course panels and are pre-fabricated of No. 1 Grade Western Red Cedar shingles stapled to undercourse corners of overlapped 11/32" plywood. Flush-mounting Corner units are manufactured and supplied in "lefts" and "rights" alternating widths so that the vertical corner line is eliminated. The plywood backer is marked A, B, C, and D on each of the lefts or rights to correspond to one of the four different corner pieces. Every bundle comes with two pieces of each letter for a total of 8 pieces. The Boston weave alternating lap corner construction is used (rather than mitered corners) where the corner overlap alternates with each course and the "lefts" and "rights" have leg returns ranging from 2.5" to 5.25 inches in width to create a larger staggered pattern. This stagger eliminates any continuous vertical line or "patterned look" at the corner and provides a natural hand woven corner appearance.

Caution: Do NOT use as an overlay corner!

2. Application.

Building corners should be double wrapped with code approved building paper. Apply the corners as they come from the bundle. The back of each piece is marked for installation. The pattern should be A, B, C, D repeating (See figure 1.) Install the first corner piece with the bottom edge of the plywood backer flush with the sill plate and a minimum 6 inches above grade. Fasten the corner piece with one nail per side, 1 inch in from each edge and 1.4 inches down from the top. Use 8D ring shank siding nails in double dipped galvanized or stainless steel. The nails should penetrate the corner stud at least 1/2 inch and nail heads should be flush with the cedar shingle. Use caution not to overdrive or the shingles may crack.

3. Additional guidelines.

After installation, apply a 1/4" bead of exterior rated caulking to the edge of the plywood backer on each side of the corner piece. One course panels are trimmed square and butted to the corner. Take care to limit caulk from squeezing onto the face of the panel. Nail panels per application instructions.



4-Piece Flush corner set. 2 of each piece per bundle

Double wrap corners

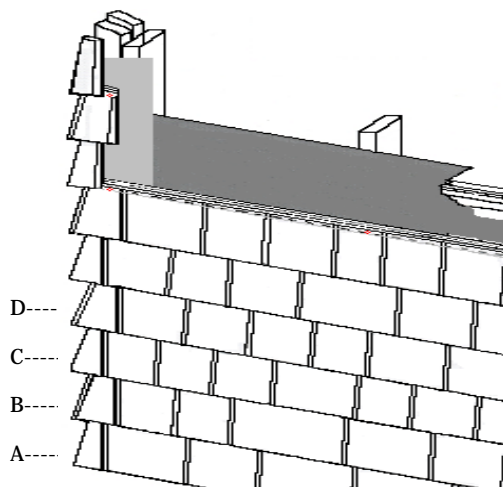


Figure 1



Technical Bulletin No. 18

Cal State Fire Code Approval

The following are results of the various fire tests* performed on 1-Course Cedar Valley panel styles by certified engineering and test laboratories.** These tests utilized current calculations and the required SFM Chapter 7a criteria.

Fire Testing

California Stack Panels are recognized by the California State Fire Marshal and listed in the Wildland Urban Interface (WUI) products compliance handbook as an approved wood siding product.

(WUI Handbook)

- 1) Cedar Valley "California Stack" 1-Course panels
California SFM 12-7a-1 Fire Test Passed
 - a. The "California Stack" is an untreated non-routed stackable panel with a square cut plywood backer and Western Red Cedar natural shingles on the face.
 - b. The following options are available and approved for use under the California State fire Marshall WUI Products Handbook for Cedar Valley Panels.
 - i. All shingle Exposures offered by Cedar Valley
 - ii. Even And Staggered buttlines
 - iii. Open And Closed Keyway options
 - iv. Thickbutt Shingles
- 2) California State Fire Marshall Listing number under the Building Materials Listing Program
 - a. (BML) #8140-2023:0002
 - b. All panels have the SFM logo & number stamped on the back.



LISTED Siding for W.U.I.
CSFM 8140-2023:0002
Cal Stack
Meets Chapter 7A of CBC
Cedar Valley Mfg.
943 San Felipe Road
Hollister, Ca 95023

CALIFORNIA DEPARTMENT of FORESTRY and FIRE PROTECTION OFFICE OF THE STATE FIRE MARSHAL



WILDLAND URBAN INTERFACE (WUI) PRODUCTS

Published by **CAL-FIRE**
FIRE ENGINEERING DIVISION

Revised 09/15/08

<http://osfm.fire.ca.gov/strucfireengineer/pdf/bml/wuipproducts.pdf>

1-Hour Wall Firewall Assembly is independent of fire code Requirements

(All W.U.I approved panels are limited to 1-Course style)

** All test documents available upon request.



CVTB 018 Rev.2-13

15-25-35-50 Year Overview Limited Liability Warranties

Multiple Warranties with A “Rainbow of Colors”

Cedar Valley Shingle Systems has been the leader in the shingle panel industry for over 25 years. We’ve built our reputation on quality, service and flexibility. Now you can choose a warranty with those same advantages. Cedar Valley Multi-tier warranties offer four levels of coverage based on panel type & finish.

15-year Standard Panel Warranty

LIMITED
15
YEAR
Warranty



Spice Chest 1-Coat Semitrans

Standard Cedar Valley Mfg. panels carry a 15-year Limited Liability Warranty. While this warranty applies to panels that are finished after installation, Cedar Valley strongly recommends the panels be coated with a minimum semi-transparent stain **before** installation. Prestaining will help protect the shingles and reduce the occurrence of cupping or curling while extending the life of the panels. (*Clear sealers are not recommended because of the short life span of the coating!*)

25-year Factory Finished Panel Warranty

LIMITED
25
YEAR
Warranty



Cedar Bark 2-Coat Semitrans

Factory Finished Cedar Valley shingle panels with one coat of a solid body stain or 2 coats of semi-transparent carry a multi-tier warranty. The coating carries a limited 5-year warranty that is serviced by the coating manufacturer, while the panel carries a 25-year limited liability warranty. These factory finished panels are prestained by a network of authorized machine stainers and are available nationwide in a “**Rainbow of Colors**”. Ask your Cedar Valley sales representative for a color palette that shows the range available.

35-year Factory Finished Panel Warranty

LIMITED
35
YEAR
Warranty



Pinnacle Green

When low maintenance means as much as a natural siding choice then the Cedar Valley Factory Finished machine staining process is for you. Using the Two-Coat Factory Finish process, Cedar Valley panels are prestained with a primer and an acrylic top coat to give them an extremely durable and long lived coating. This system carries a limited coating warranty that is serviced by the coating manufacturer along with a 35-year limited liability panel warranty. Available nationwide in a “**Rainbow of Colors**”, this system is recommended for projects where low maintenance is desired by the owner.

50-year Factory Finished ½” Thickbutt Panel Warranty

LIMITED
50
YEAR
Warranty



Pinnacle Gray

Combining the durability of the Two-Coat Factory Finish process with the unique beauty of the ½-inch thickbutt panel, Cedar Valley has the answer for longevity and low maintenance shingle siding. Our thickbutt panels are prestained with a primer and acrylic top coat to give them an extremely durable and long lived coating. This system carries a limited coating warranty that is serviced by the coating manufacturer along with our longest 50-year panel warranty.



(See actual warranty for limitations!)

CVPS-107 Rev.2-13



Prefinished Siding Order Form

As easy as 1-2-3!

1. Have your customer pick the Quantity, Style, Exposure, Grain and Thickness
2. Add any accessories like corners and we will stain for you too!
3. Determine the desired color from the list and we will handle the rest!

We'll send a color sample for approval, factory finish the material and ship the completed order to you.

Questions? Call 1-800-521-9523

Fax to: Cedar Valley 1-831-636-8109

Company Name _____
Address _____
City _____
State _____
Zip _____

Tel. # _____
Fax # _____
E-Mail _____
Contact _____

1 (product info) Quantity (square feet needed) SF

Panel Style ☐ Evenbutt 
☐ Evenbutt Keyway 
☐ Staggered Butt 
☐ Staggered Butt Keyway 

Exposure ☐ 7 1/8"
☐ 5.3"
☐ 4.25"
☐ Other _____

Grain ☐ Vertical (V.G.)
☐ Mixed (M.G.)

Thickness ☐ Thickbutt (1/2")
☐ Standard



2 (accessories)

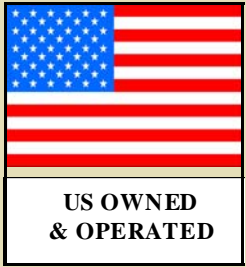
Outside ☐ 90-Degree Flush _____ LF
Corners ☐ 135-Degree Flush _____ LF
☐ 90- Radius Flare Set _____ # Sets
☐ 135-Radius Flare Set _____ # Sets
(135 are for Bay Windows)

Inside ☐ 2" X 2" _____ LF
Corners ☐ 5/4" X 5/4" _____ LF
Specialty ☐ (call 1-800-521-9523)
(and we will handle it!)

3 (Color Sample approval info) See Reverse Side for Available Colors

☐ Color Name S-transparent
Semi-transparent has 24 available colors
*Coating Warranty for S-trans = 5 years
*Panel warranty for S-trans = 15 years

☐ Color Name Solid
2-Coat Solid has 97 available colors
*Coating Warranty for 2-Coat Solid = 12 years
*Panel warranty for 2-Coat Solid = 35 years
*1/2" Thickbutt Panel warranty 2-Coat Solid = **50 years**



CEDAR VALLEY

UNSURPASSED BEAUTY WITH ENGINEERED DURABILITY



CEDAR~LAMTM

Photo courtesy T.S. Williams Construction

CEDAR LAM

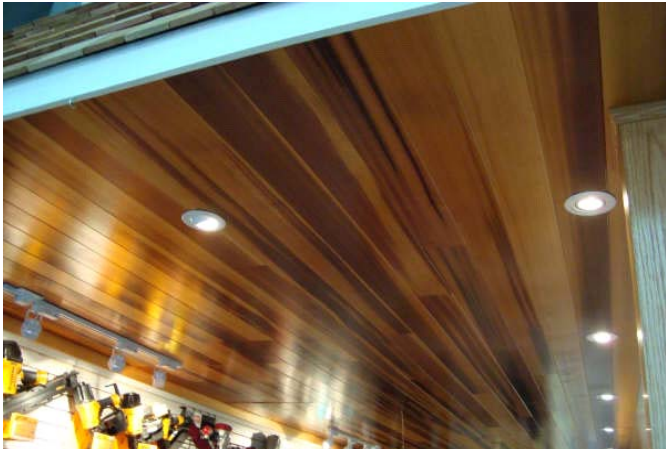
UNSURPASSED BEAUTY WITH ENGINEERED DURABILITY



INTERIOR



CEILINGS



SOFFITS

FEATURES:

- 100% WESTERN RED CEDAR-KILN DRIED
- ALL CLEAR VERTICAL GRAIN FACE
- CEDAR BACKER FOR MAXIMUM STABILITY OF THE LAMINATION.
- NO MIXING OTHER SPECIES TO CONTAMINATE THE LAMINATION.

BENEFITS:

- SUPERIOR DIMENSIONAL STABILITY OVER SOLID
- LONG LENGTHS (8's, 12's & 16's)
- MINIMAL WASTE
- NO/LOW VOC ADHESIVES
- EFFICIENT USE OF CEDAR RESOURCES
- U.S. OWNED AND OPERATED COMPANY

USES:

- INTERIOR PANELING & CEILINGS
- PREFINISHED ALL-SEASON ROOMS
- WAINSCOTINGS
- POST & BEAM CONSTRUCTION
- FACTORY FINISHED EXTERIOR SIDING



FOLLOW US ON YOUR SMART PHONE

T.800.521.9523 F. 831.636.8109

www.cedar-valley.com